

Making a felted soap bar

Felted soap is soap covered in felt made from wool. This helps soap last longer and makes slippery bars easier to hold.

Your aim:

To make a felt cover for a bar of soap.

You will need:

- 1 bar of soap
- A selection of coloured felting wool
- 1 nylon stocking
- 1 washing up bowl filled with warm water
- 1 towel for mopping up water
- A flat, uncluttered space for working with the wool

Helpful tips

- If you can, do this at a sink. If not, place an old towel underneath a bowl to catch spillage and place it on a steady table.
- Test the water temperature in the bowl is not too hot.
- If you do the activity at a sink, take breaks to prevent back pain.
- If you do the activity at a table, make sure your seat is comfortable and at a height that keeps your shoulders relaxed.
- Chose some extra fine bits of wool and make patterns on top to give more colour to your soap bar.
- You can do a little bit of extra rubbing with warm water to make the felt extra strong.

How to do it

Please read these instructions and look at the pictures before starting.

1. Lay out the coloured wool so that all the fibres are lying flat and long. The wool has been brushed so all the fibres are going in one direction.



2. Pick one colour of wool and wrap it around the longest length of the soap.



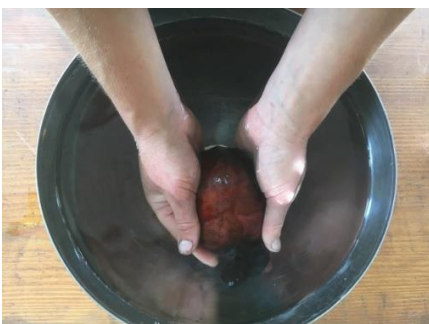
3. Select another colour and wrap it around the shortest length of the soap so all surfaces of the soap are covered.



4. Carefully place the woolly bar of soap into the nylon stocking. Twist the top tight to hold the wool in place.



5. Dip the stocking into the bowl of warm water. Allow the wool to soak for 1 minute, gently pressing and squeezing it under the water.



6. Bring the stocking out of the water. Gently rub and squeeze the wool whilst turning the stocking in your hands for around 10 minutes, occasionally dipping it back into the warm water.



7. Take the soap out of the stocking and rinse it in cold water. The wool will have shrunk to fit around the bar of soap.



8. You will now have your own felted soap bar. You can use it straight away or let it dry out.

